

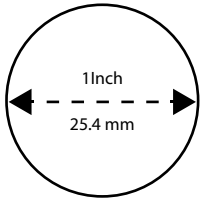
# GIVEWAVE studios

## PROWLER BOOTS ( INTO THE SPIDERVERSE )

- 2-3 mm Foam
- 8 mm foam
- Detail lines
- 5 mm Foam
- 10 mm foam
- Beveled Edge

### SCALE

This circle measures 1inch / 25.4 mm

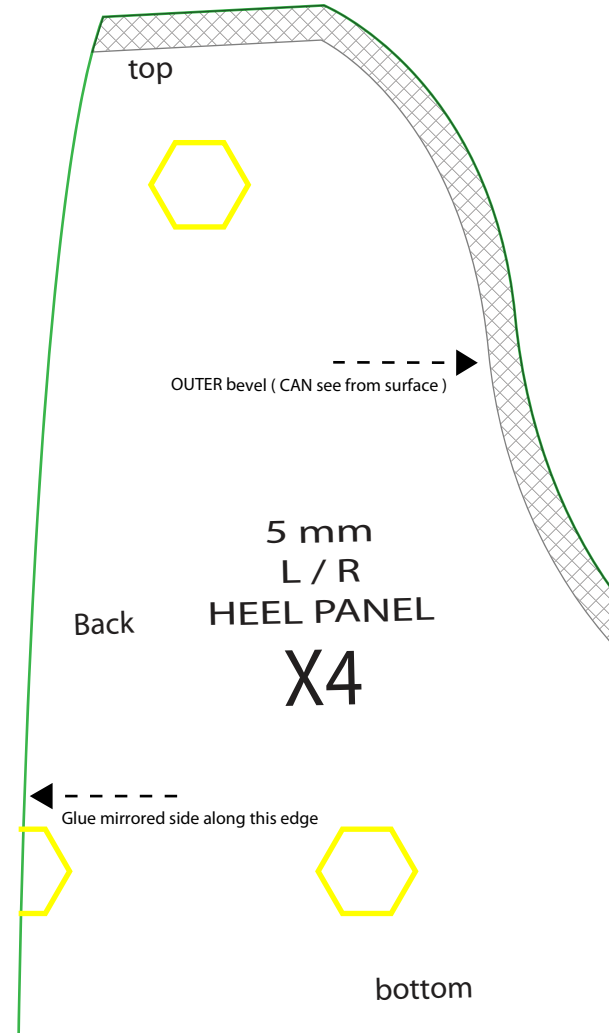
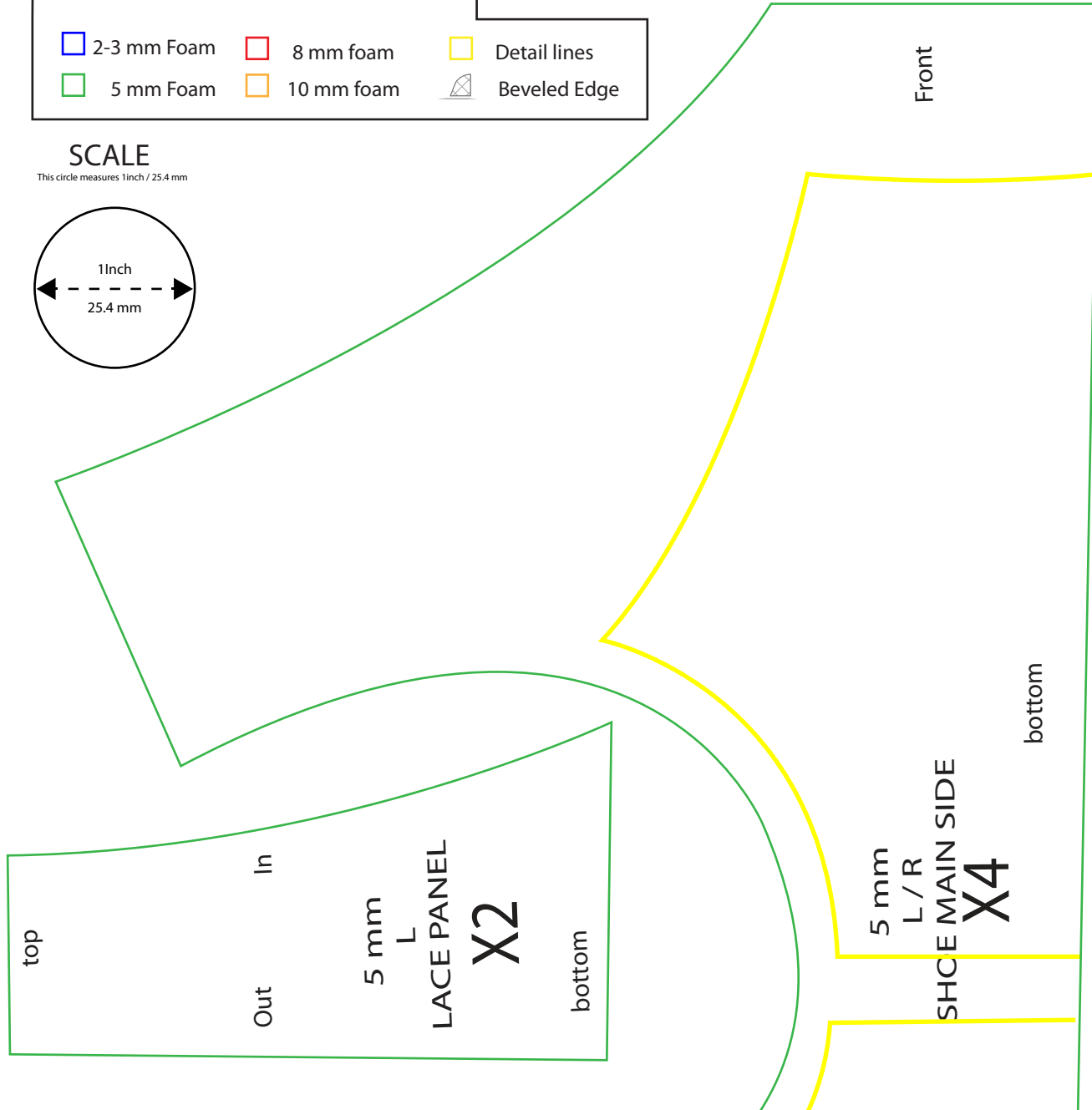


**NOTES:**

- At 100% scale makes a size 10.5 MENS boot cover ... scale patterns up/down depending on your shoe size.
- Be sure to watch the step by step tutorial on the GiveWave Studios Youtube Channel ( if one exists for this build )
- This contains L/R Patterns, be sure to flip your patterns when cutting out pieces & label them Left & Right to differentiate.
- Although this can be assembled with hot glue or other types of adhesives using EVA foam CONTACT CEMENT is highly recommended for maximum adhesion and durability.
- Shapes with dashed lined edges are to be connected to their L/R counter parts & cut as 1 piece.
- Be sure to transfer ALL the info of your patterns to your foam pieces to make your life easier.



YOUTUBE TUTORIAL





top

---▶  
Glue mirrored side along this edge

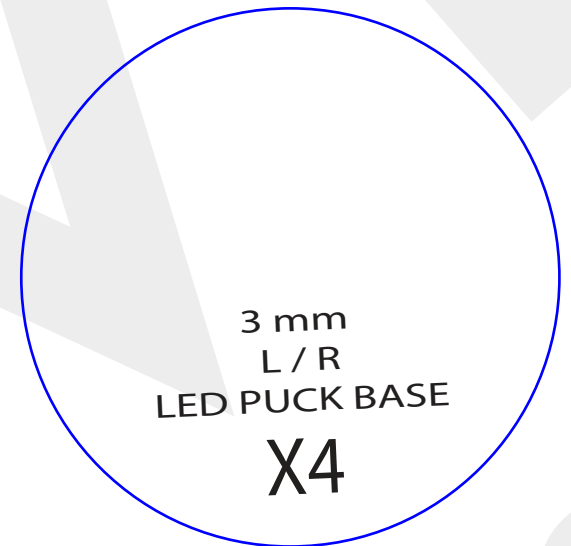
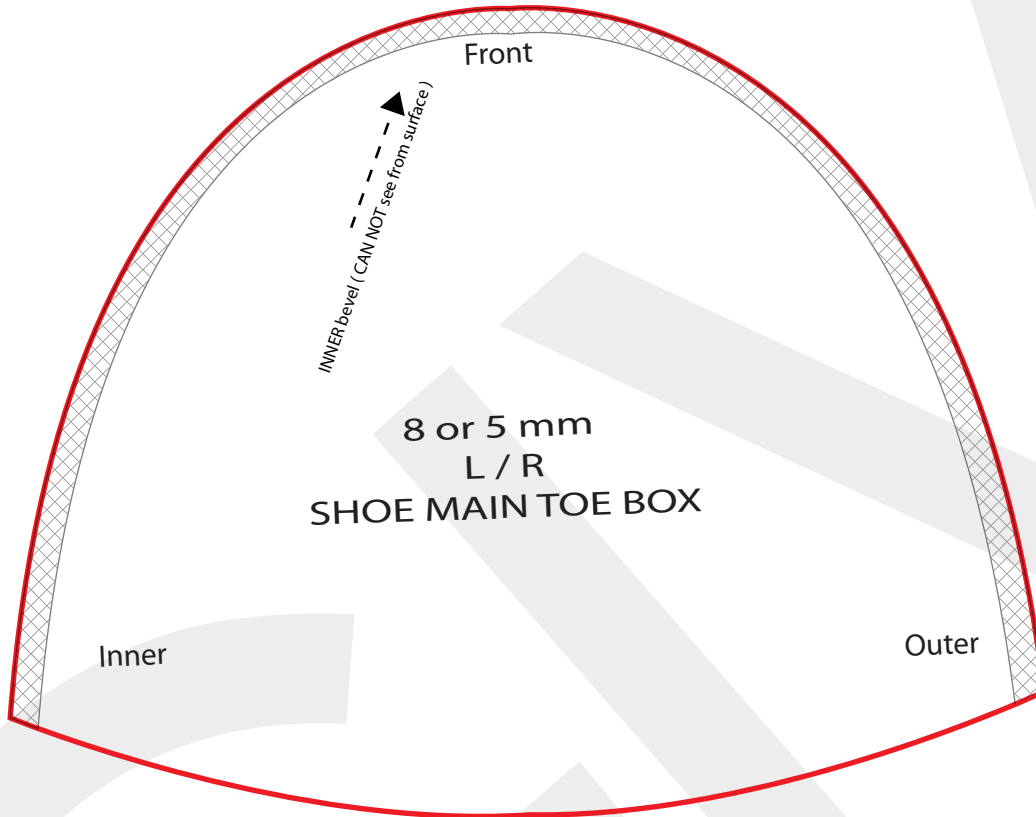
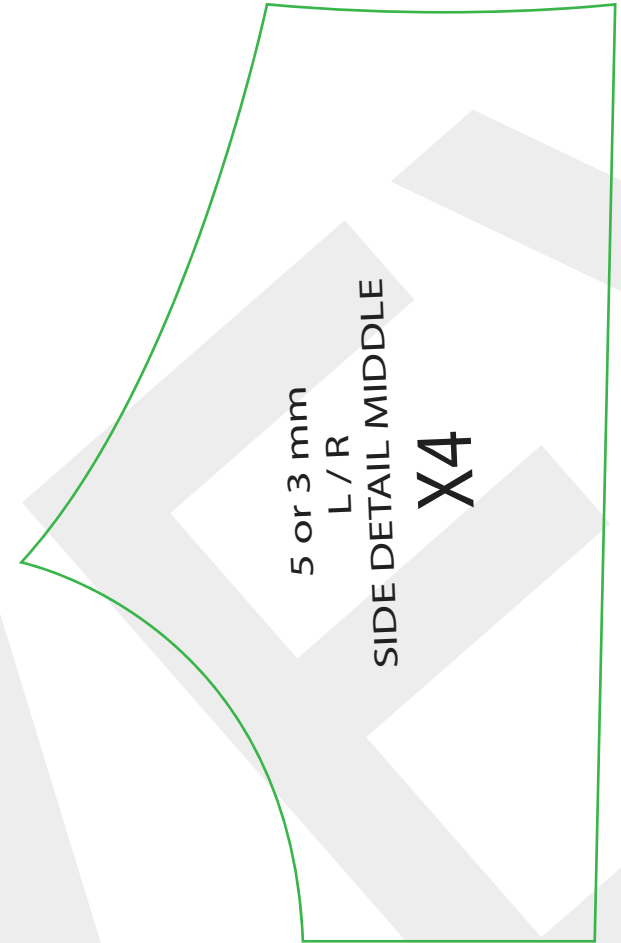
Front

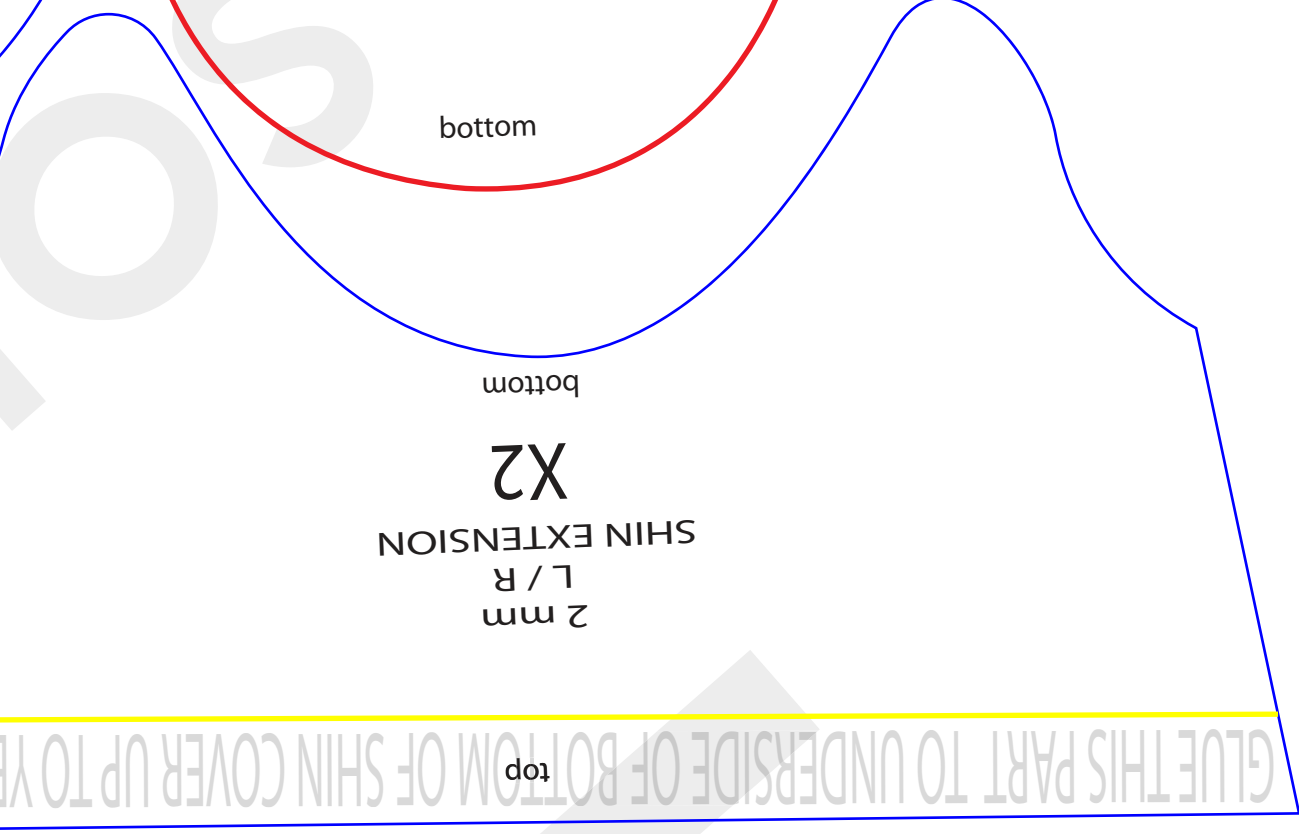
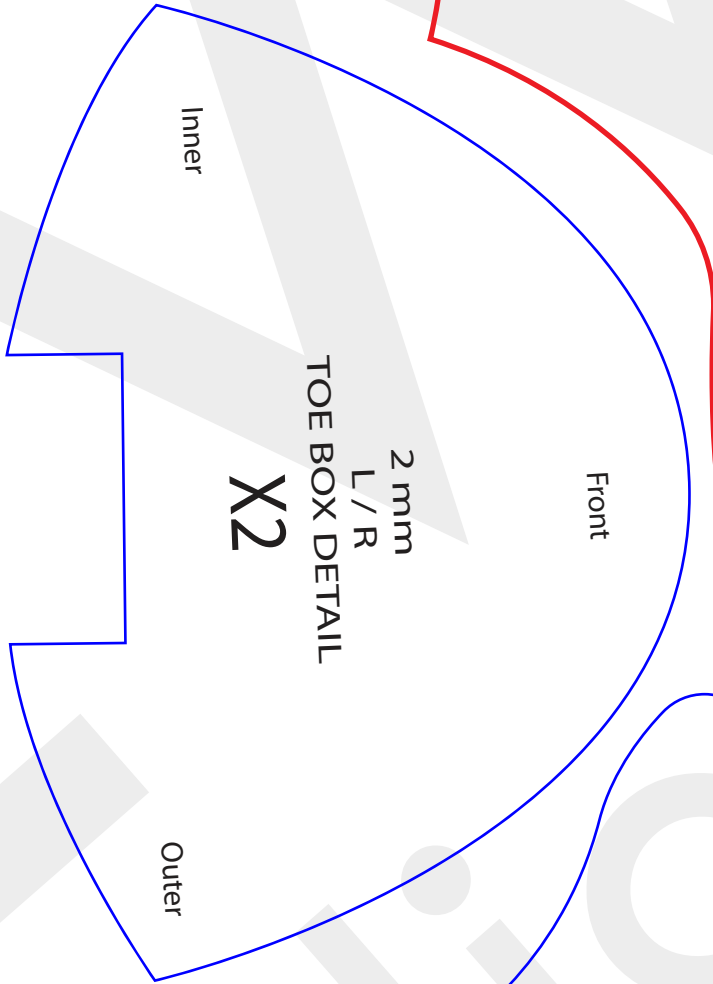
Back

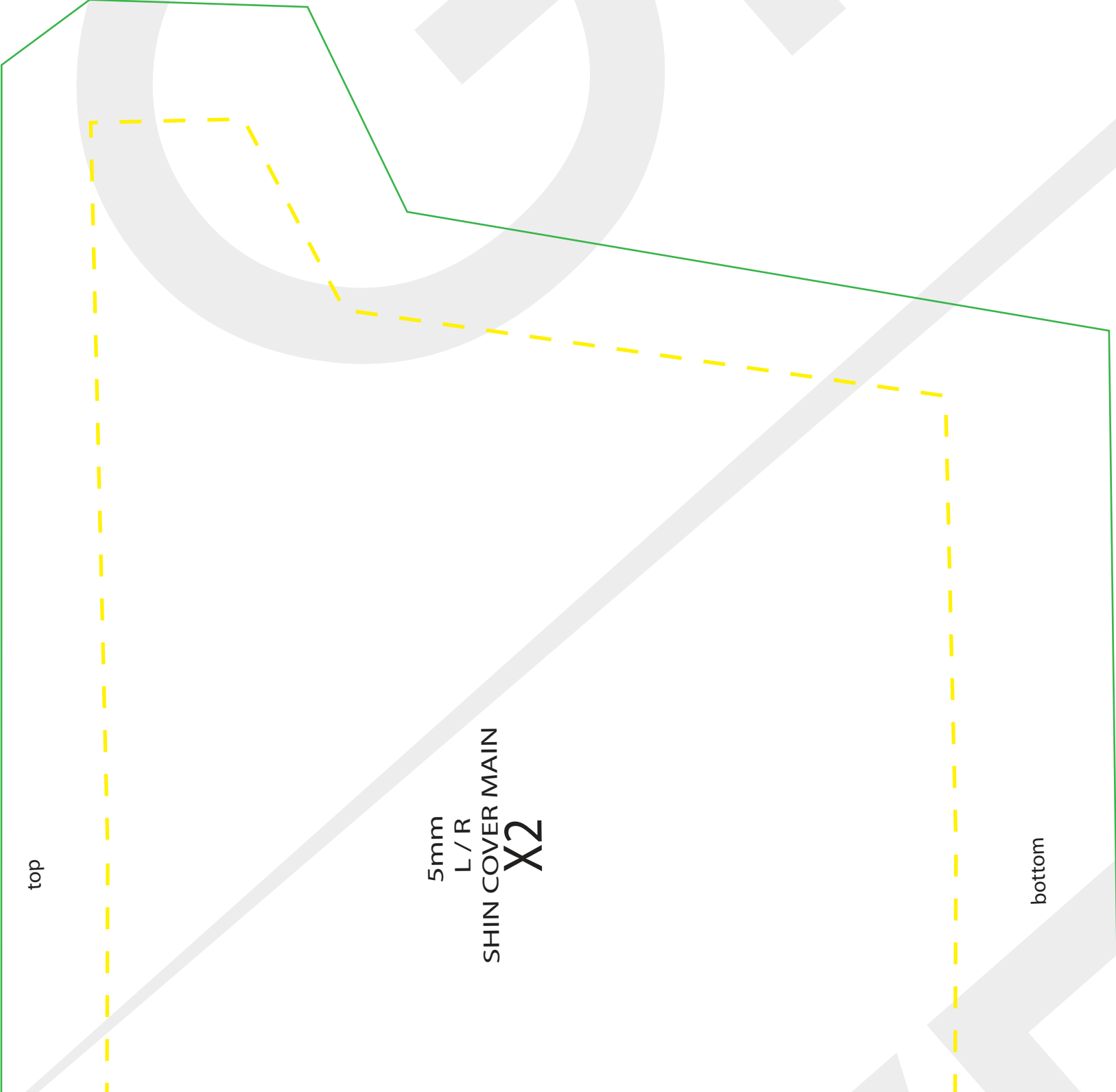
8mm  
L / R  
LEG MAIN  
X4



Side



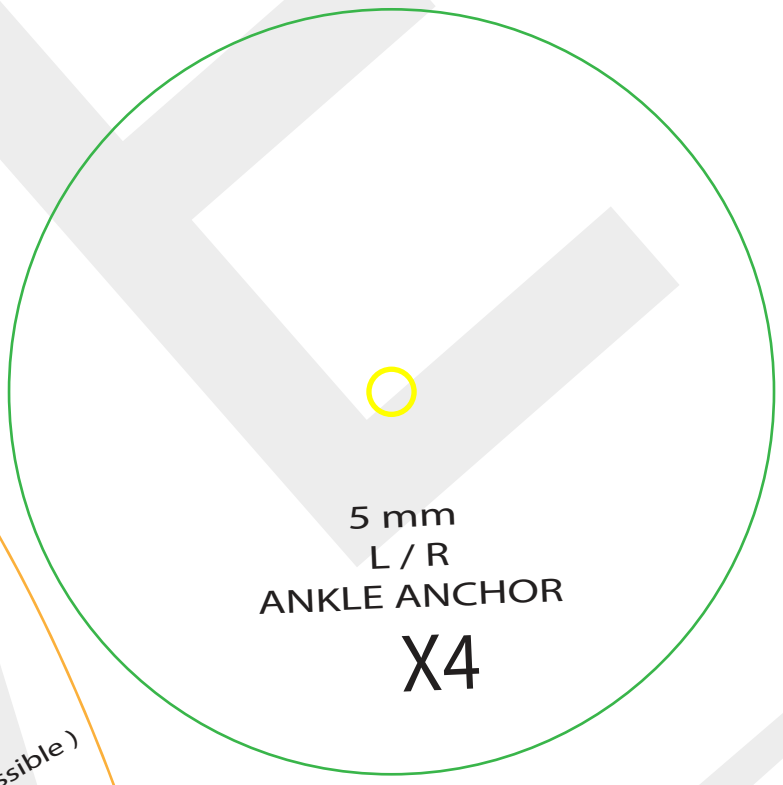
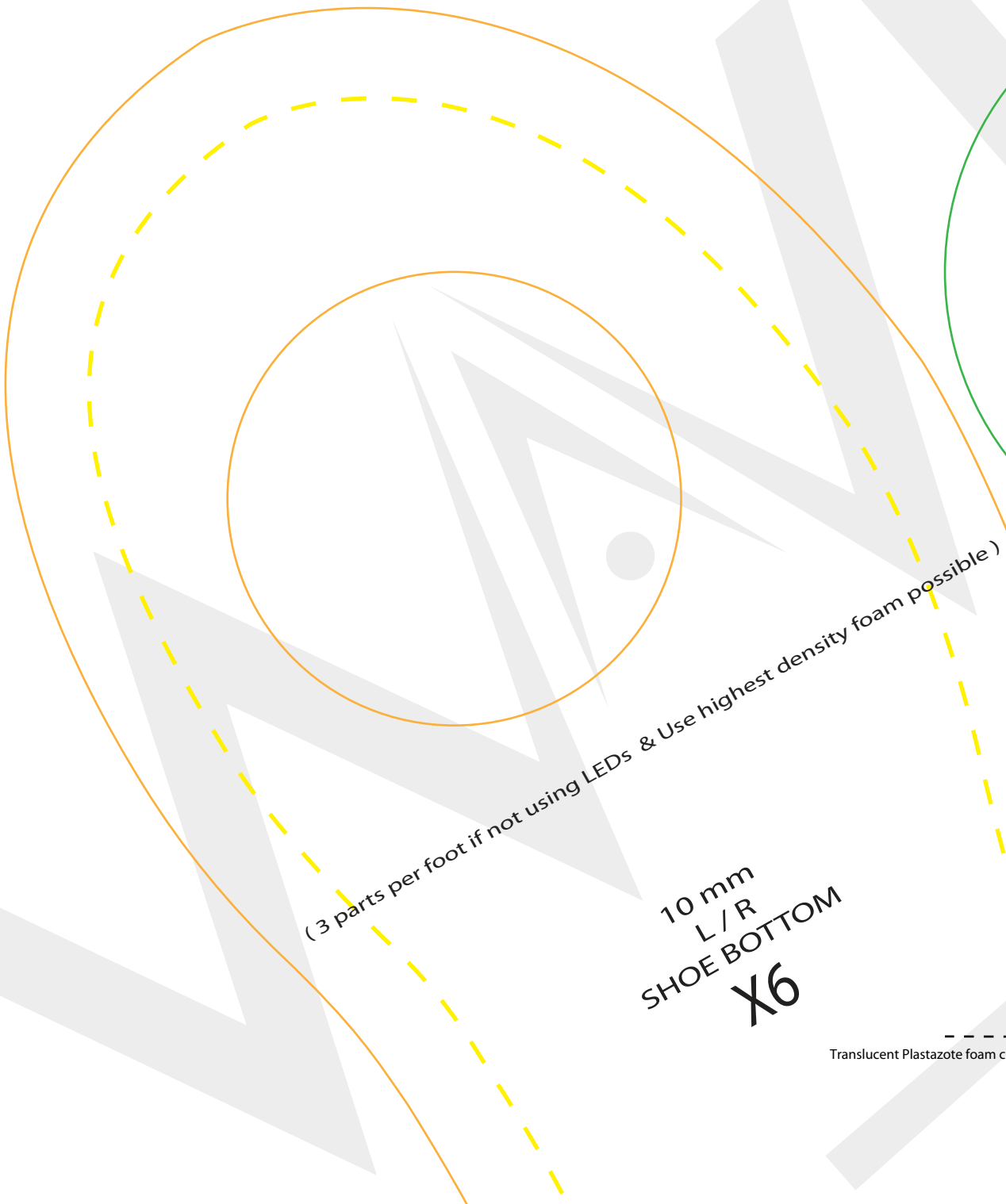




top

5mm  
L / R  
SHIN COVER MAIN  
**X2**

bottom



Translucent Plastazote foam cut off point

The text is accompanied by a dashed line with a black arrowhead pointing to the right, indicating the cut off point for the translucent Plastazote foam.



8 or 10 mm  
L / R  
ANKLE LED PUCK STRAP  
X2

The diagram shows a technical drawing of a shoe component. A red line outlines the main shape, which is a long, narrow strap with rounded ends. A green line shows a different profile, and a yellow dashed line shows a third profile. A yellow line connects the red outline to a detailed inset on the right. The text '8 or 10 mm L / R ANKLE LED PUCK STRAP X2' is written along the red line. The inset on the right is a rectangular detail with rounded corners, outlined in orange, and contains four yellow circles representing holes, labeled 'top', 'side', 'back', and 'bottom'. The text '10 mm L / R MID CALF DETAIL X4' is written inside the inset.

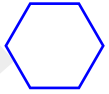
top

side

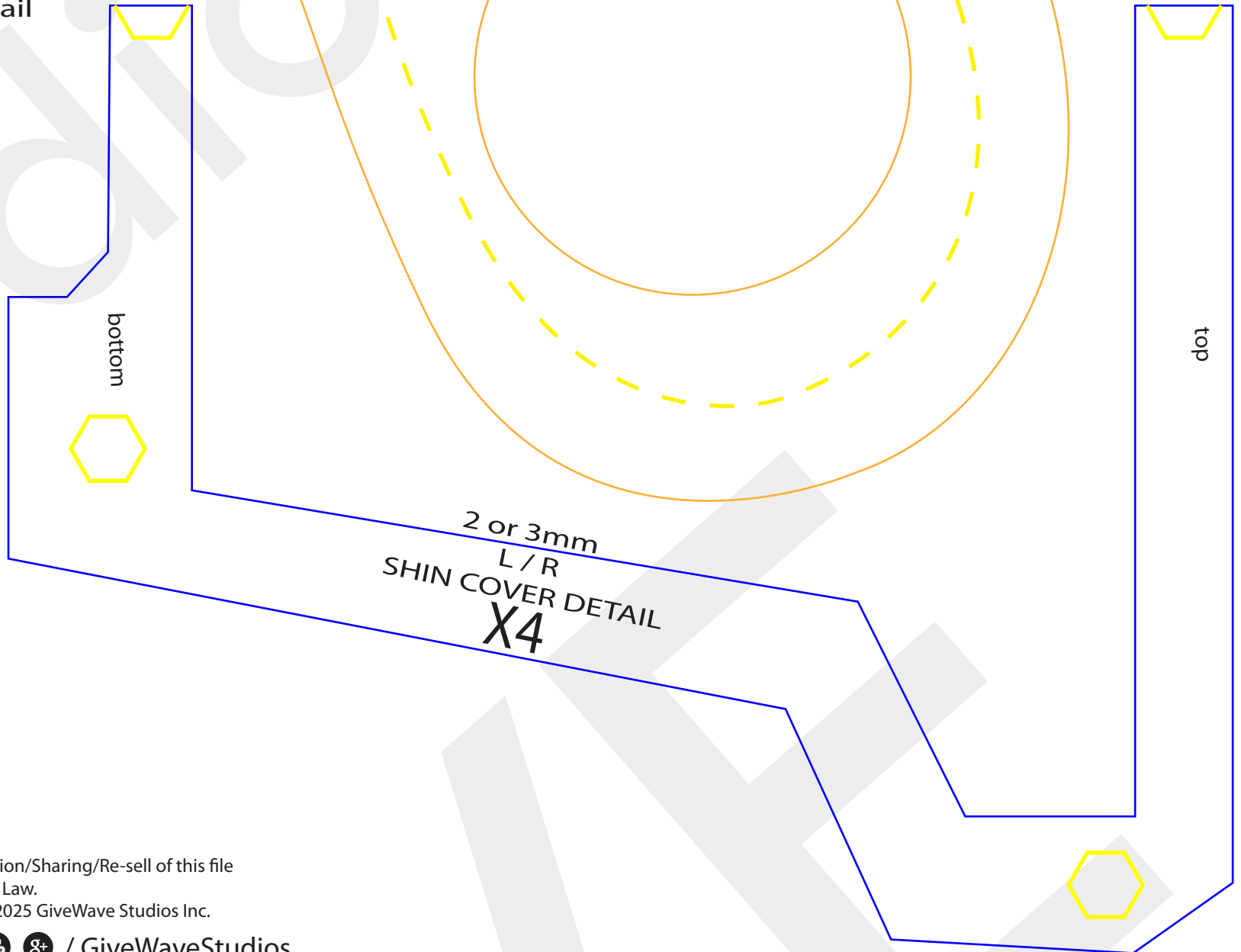
back

10 mm  
L / R  
MID CALF DETAIL  
X4

bottom



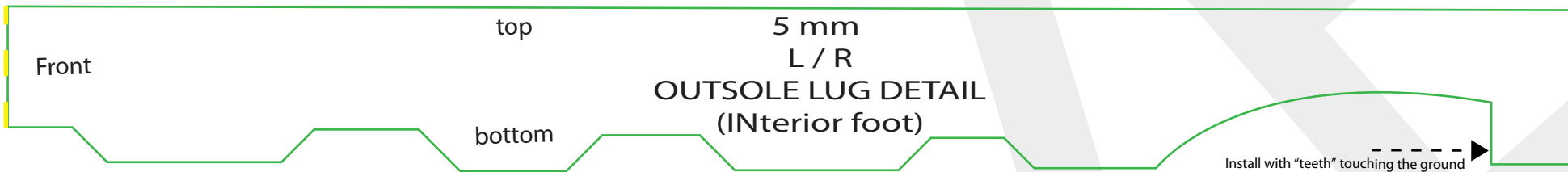
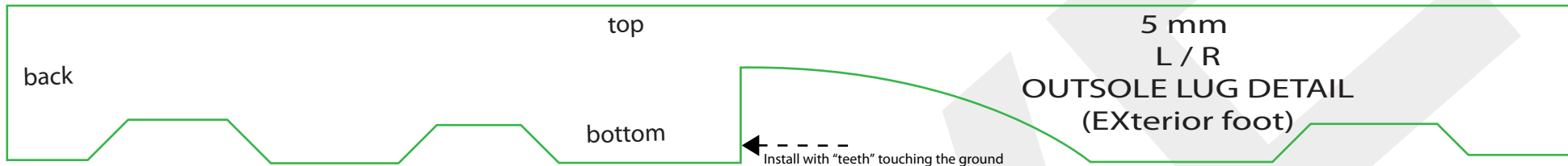
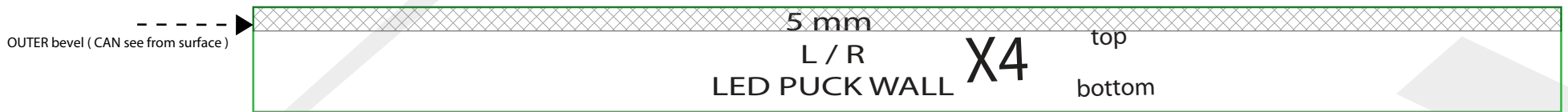
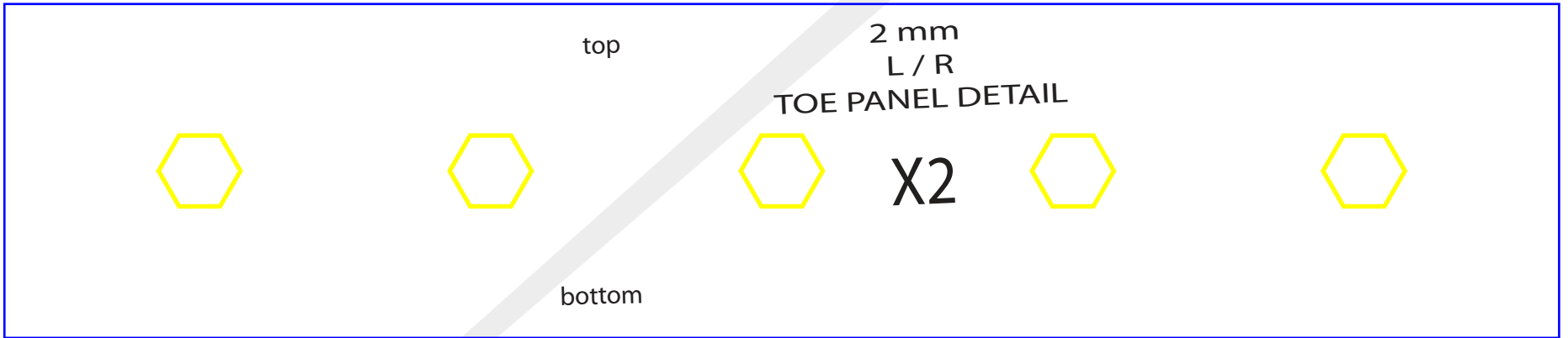
2 mm  
bolt surface detail

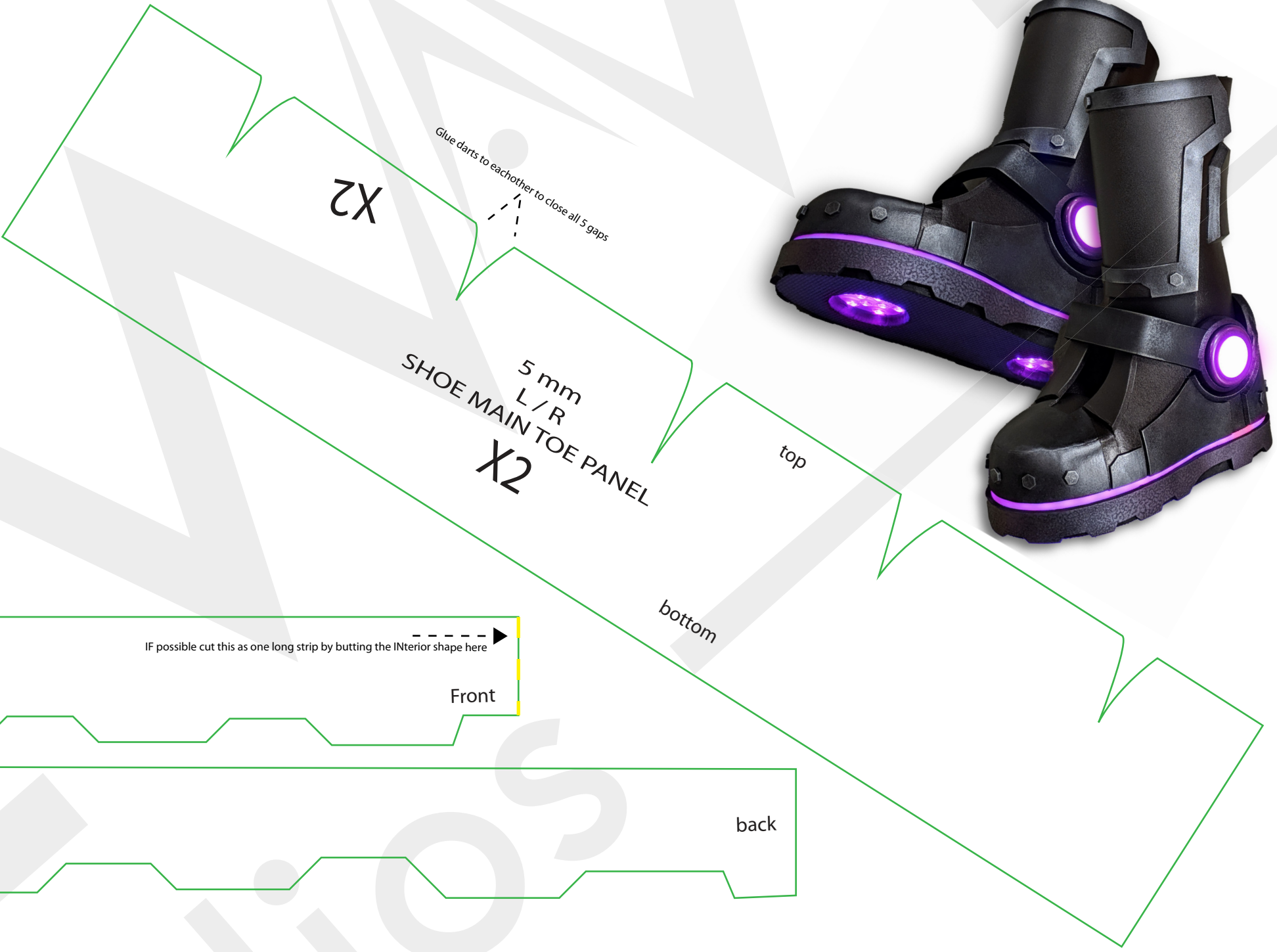


2 or 3mm  
L / R  
SHIN COVER DETAIL  
X4

Unauthorized Distribution/Sharing/Re-sell of this file  
is strictly prohibited by Law.  
All Rights Reserved. © 2025 GiveWave Studios Inc.







IF possible cut this as one long strip by butting the Interior shape here

Front

back

Glue darts to each other to close all 5 gaps

5 mm  
L / R  
SHOE MAIN TOE PANEL  
X2

top

bottom

