






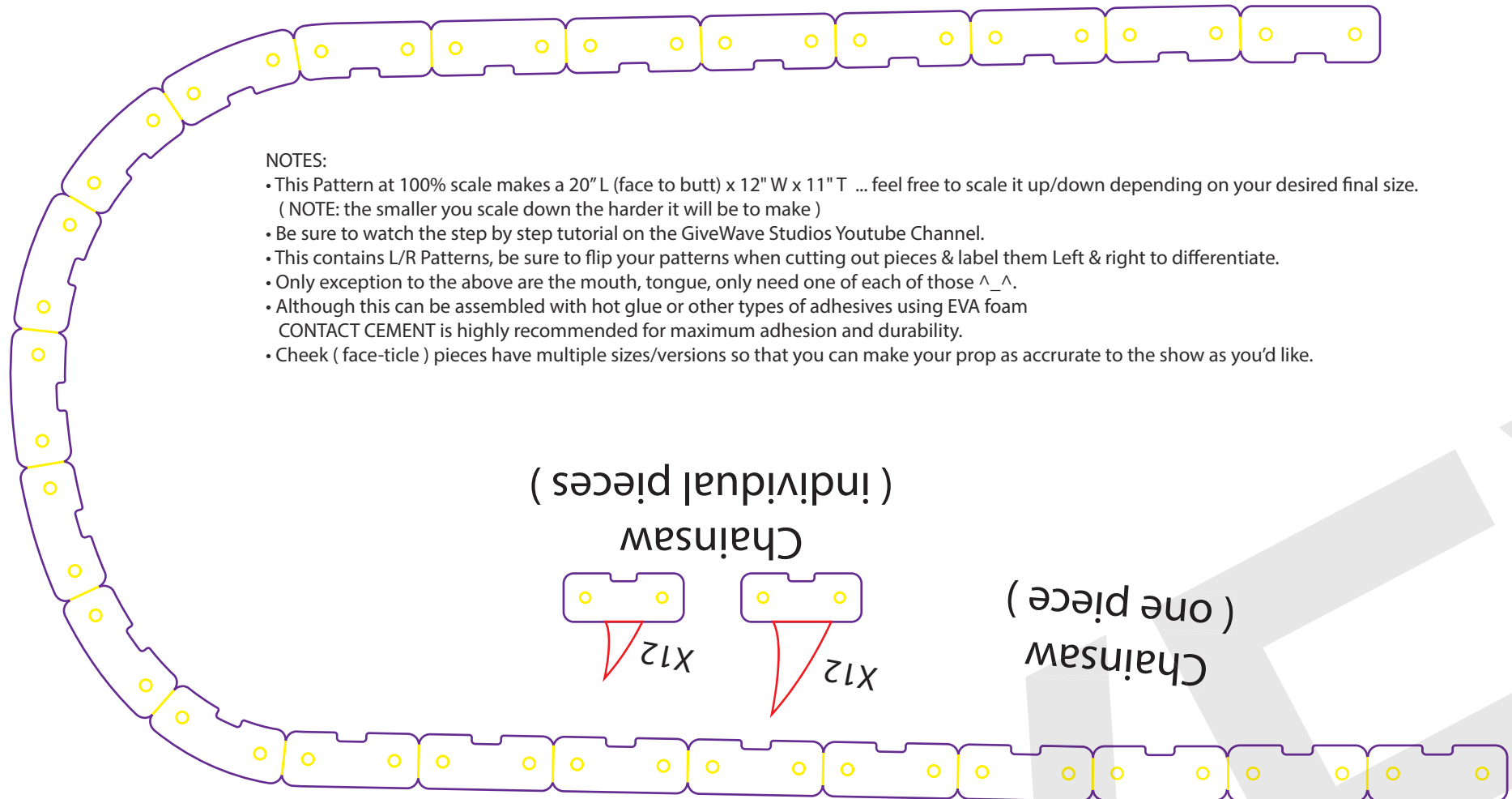


GIVEWAVE

studios

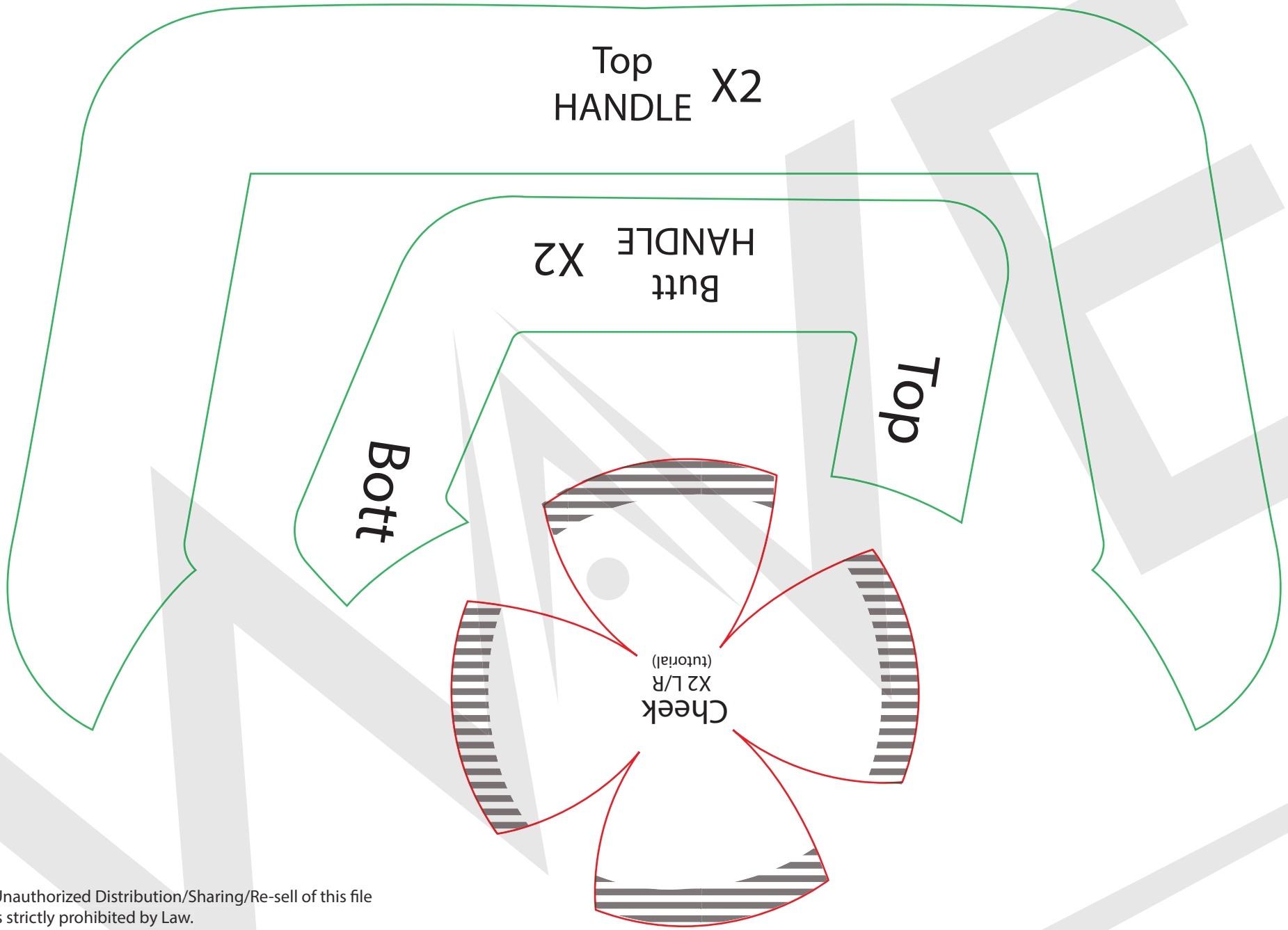
POCHITA (CHAINSAW MAN) PROP PATTERN

- | | | |
|--|--|---|
|  10 mm Foam |  Detail Outlines |  6-10 mm Foam |
|  5 mm Foam |  connecting sides |  45° Outer Bevel |
| | |  2 mm Foam |

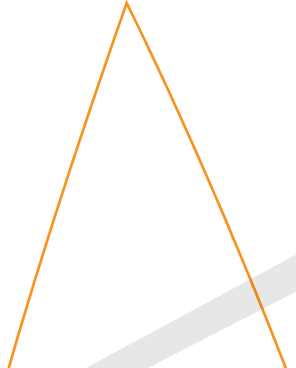
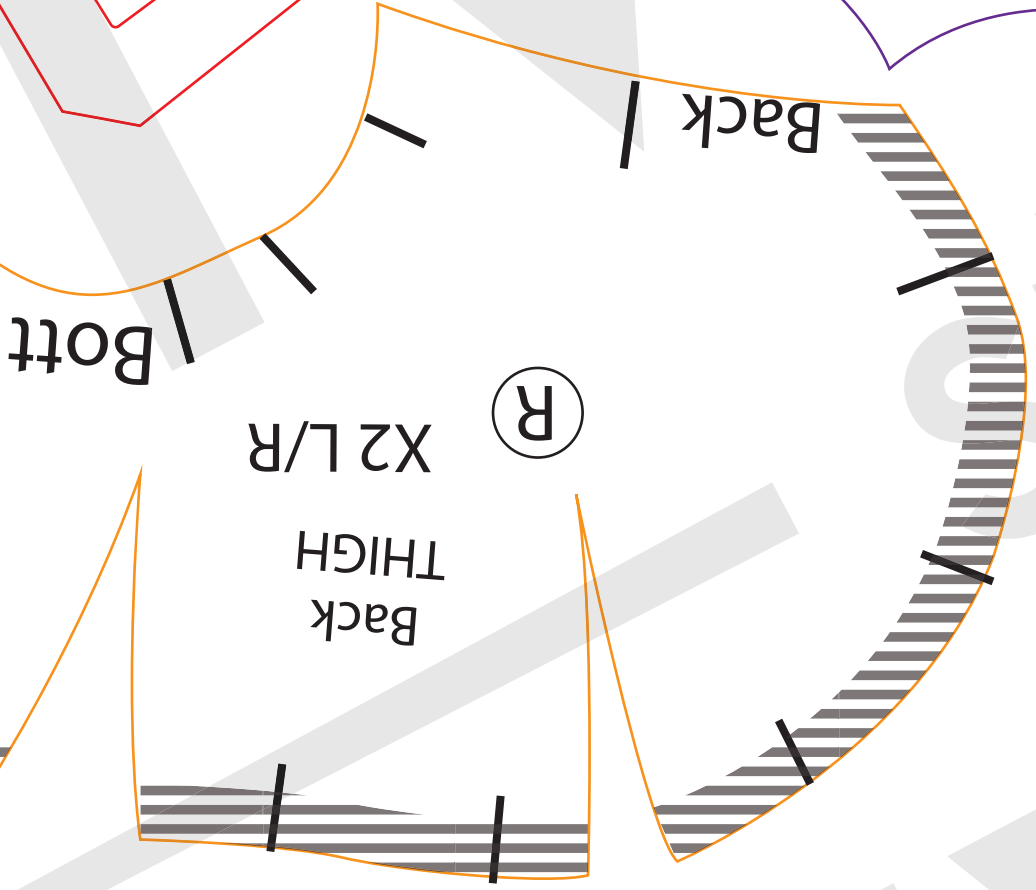
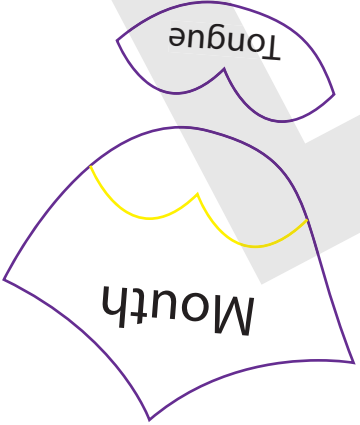
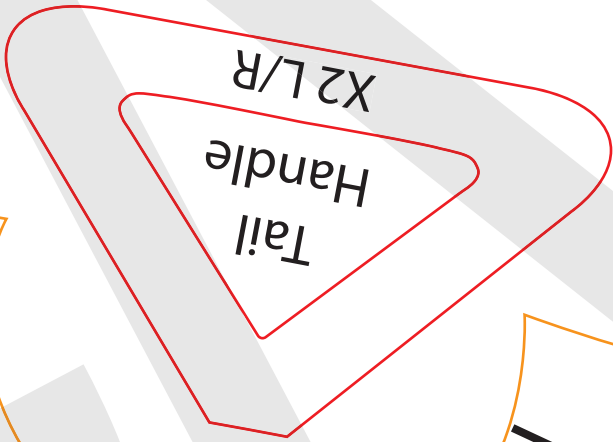
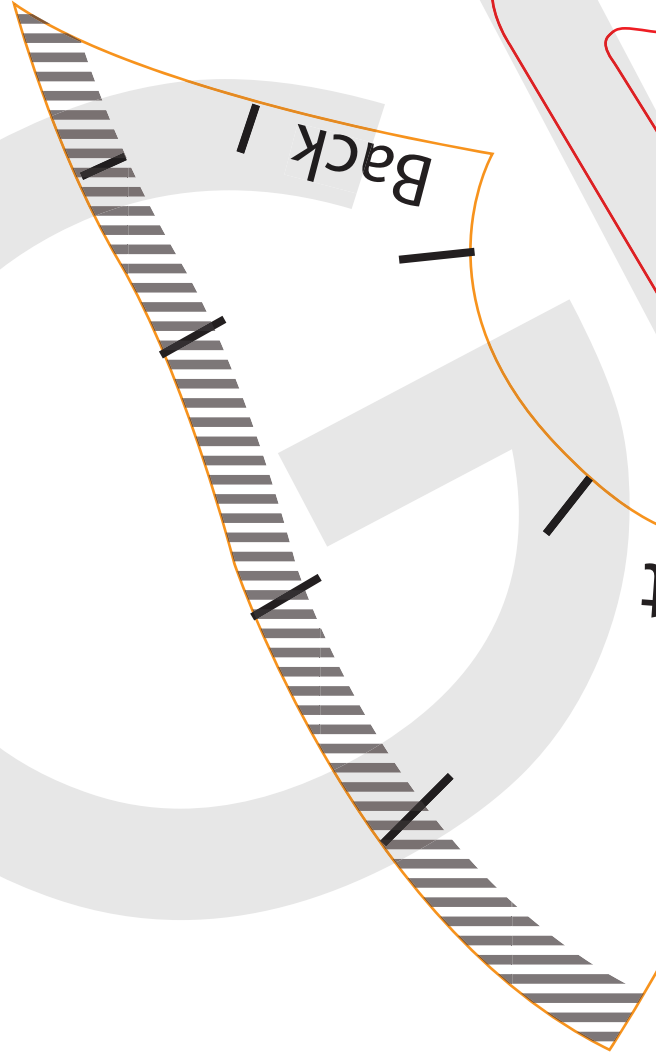


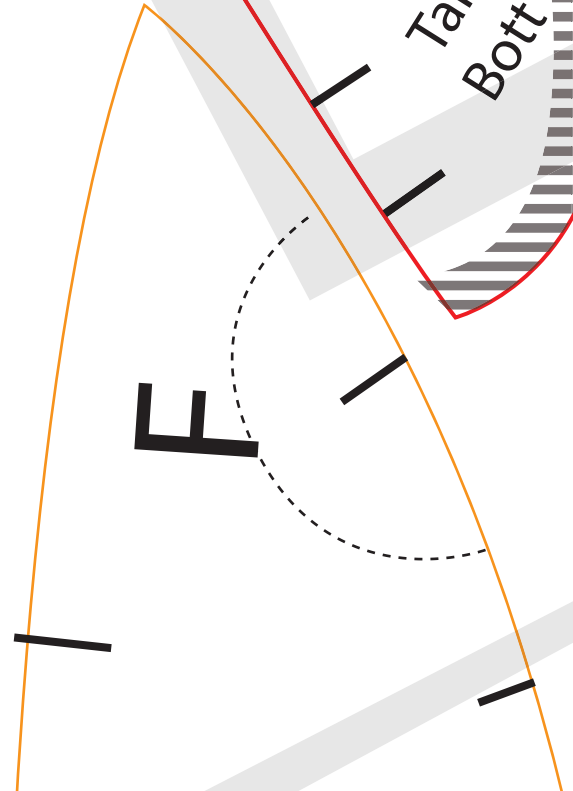
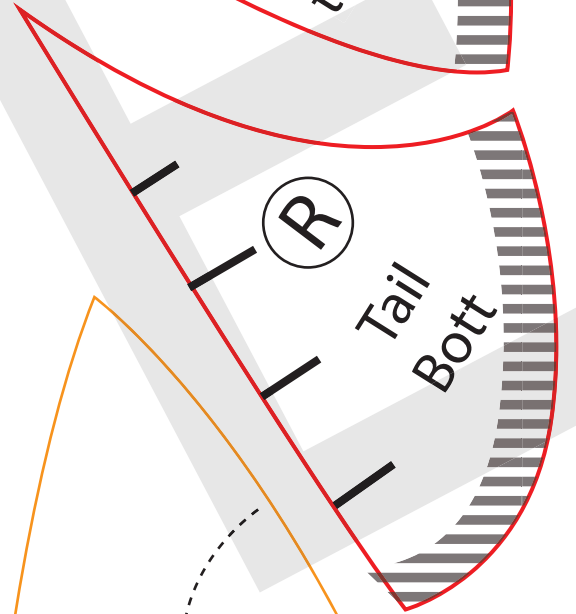
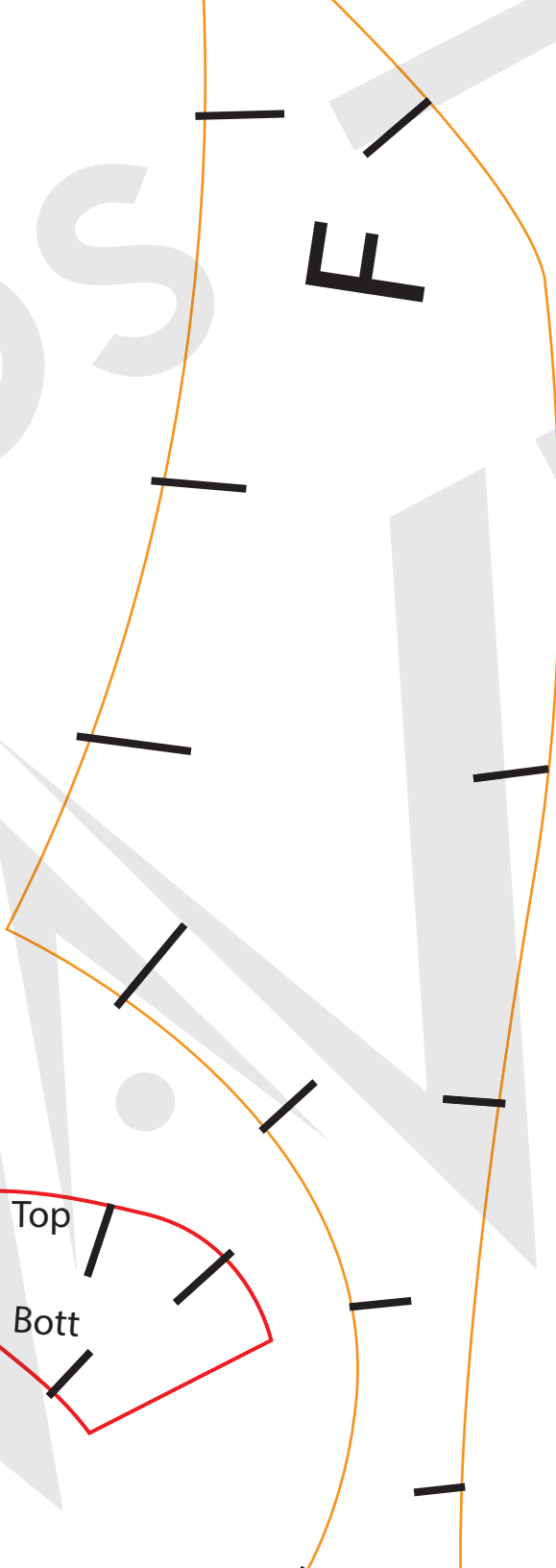
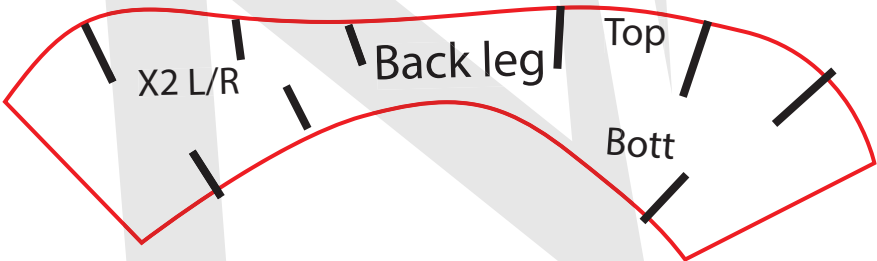
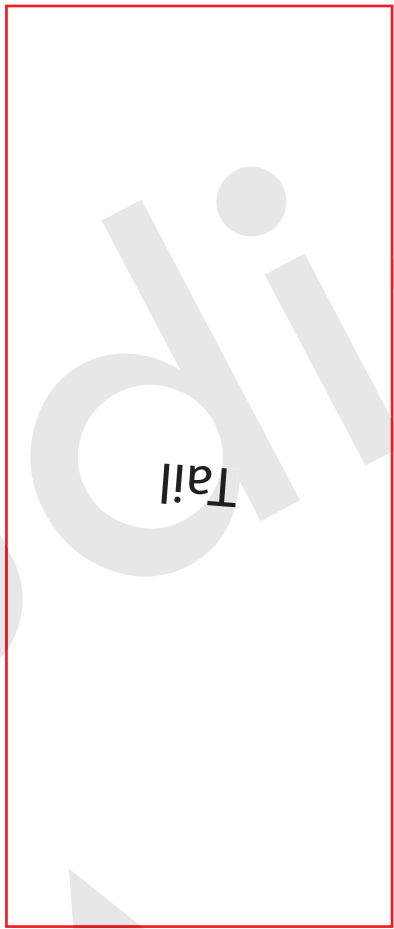
NOTES:

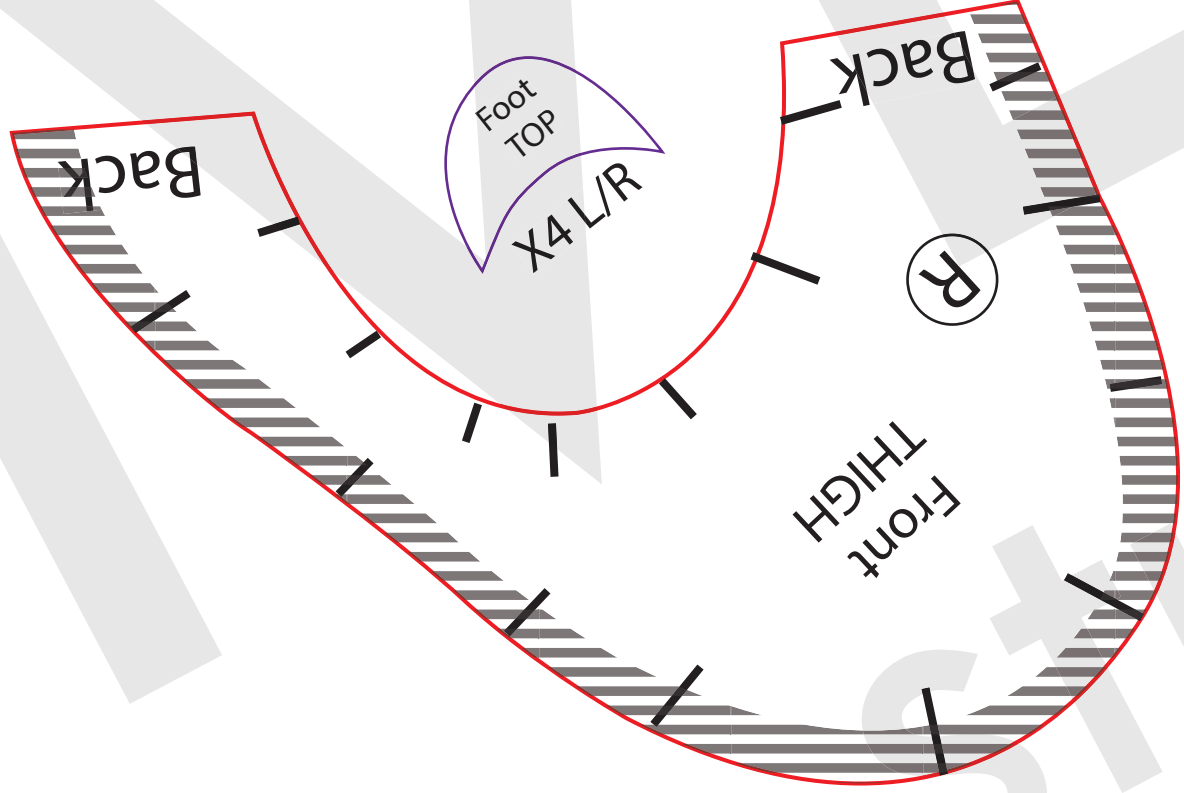
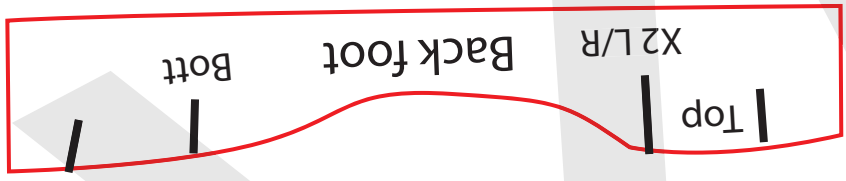
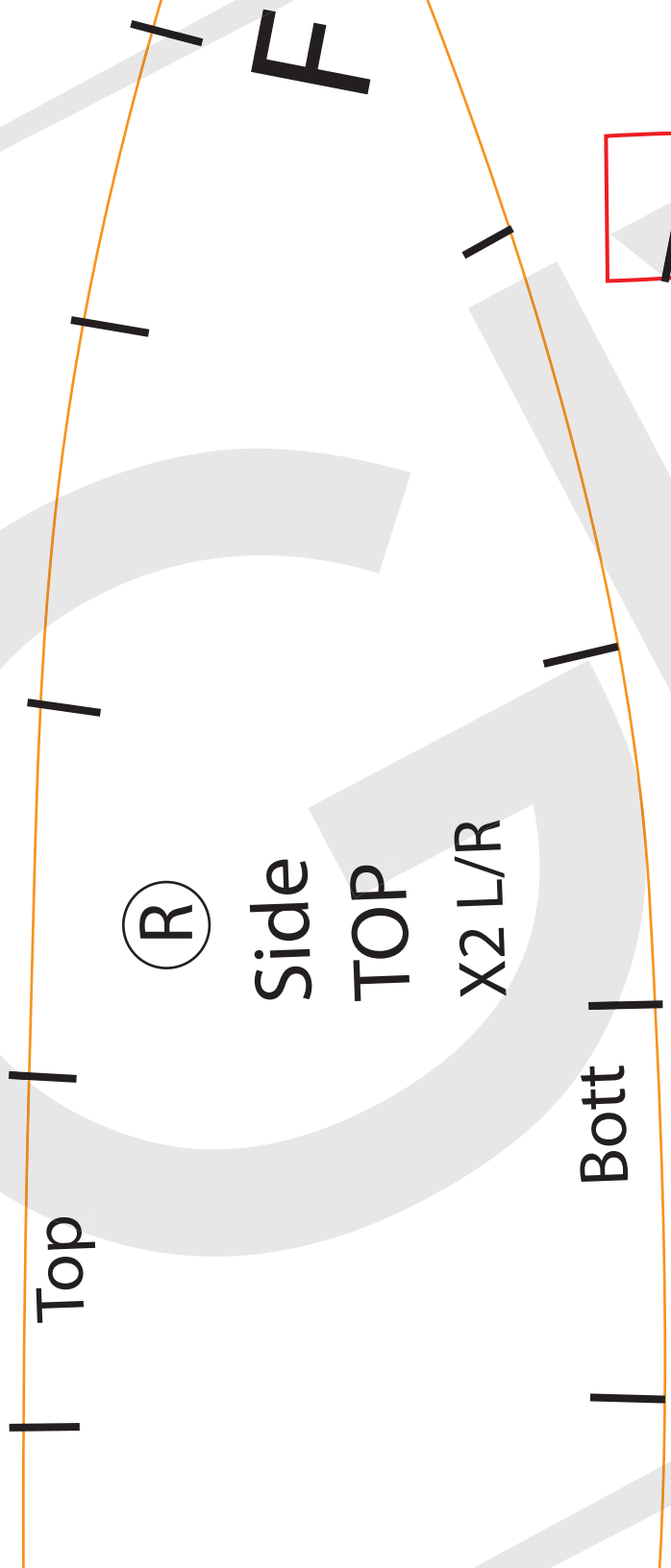
- This Pattern at 100% scale makes a 20" L (face to butt) x 12" W x 11" T ... feel free to scale it up/down depending on your desired final size. (NOTE: the smaller you scale down the harder it will be to make)
- Be sure to watch the step by step tutorial on the GiveWave Studios Youtube Channel.
- This contains L/R Patterns, be sure to flip your patterns when cutting out pieces & label them Left & right to differentiate.
- Only exception to the above are the mouth, tongue, only need one of each of those ^_^.
- Although this can be assembled with hot glue or other types of adhesives using EVA foam CONTACT CEMENT is highly recommended for maximum adhesion and durability.
- Cheek (face-ticle) pieces have multiple sizes/versions so that you can make your prop as accurate to the show as you'd like.

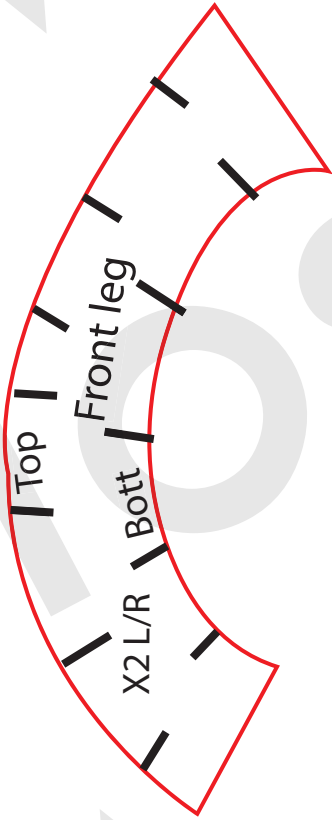
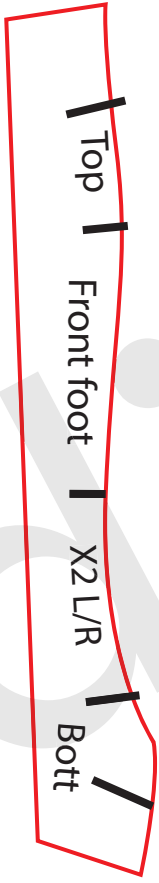


Unauthorized Distribution/Sharing/Re-sell of this file
is strictly prohibited by Law.
All Rights Reserved. © 2022 GiveWave Studios Inc.



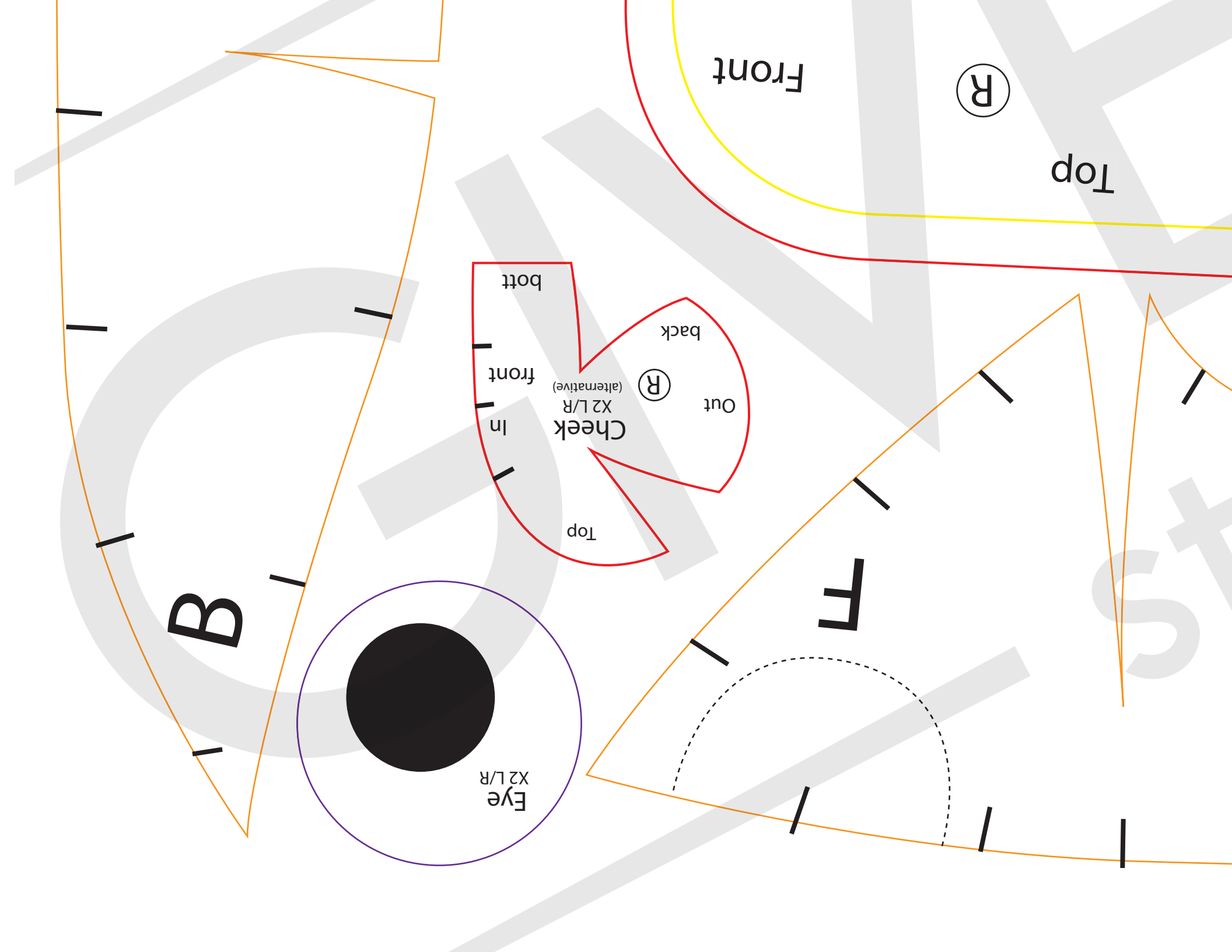




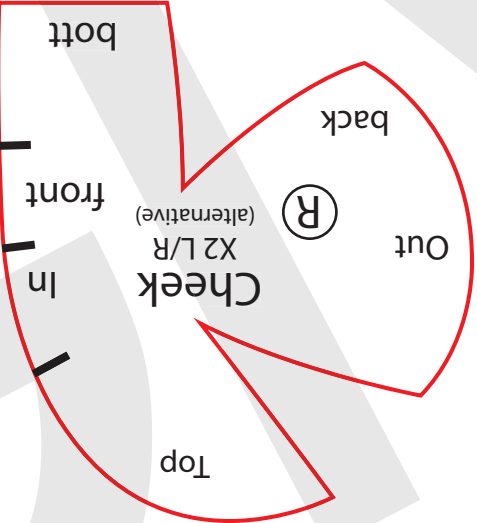


Side (R)
MEDIUM
X2 L/R





Eye
X2 L/R



bott

front

In

Cheek
X2 L/R

(alternative)

(R)

Out

back

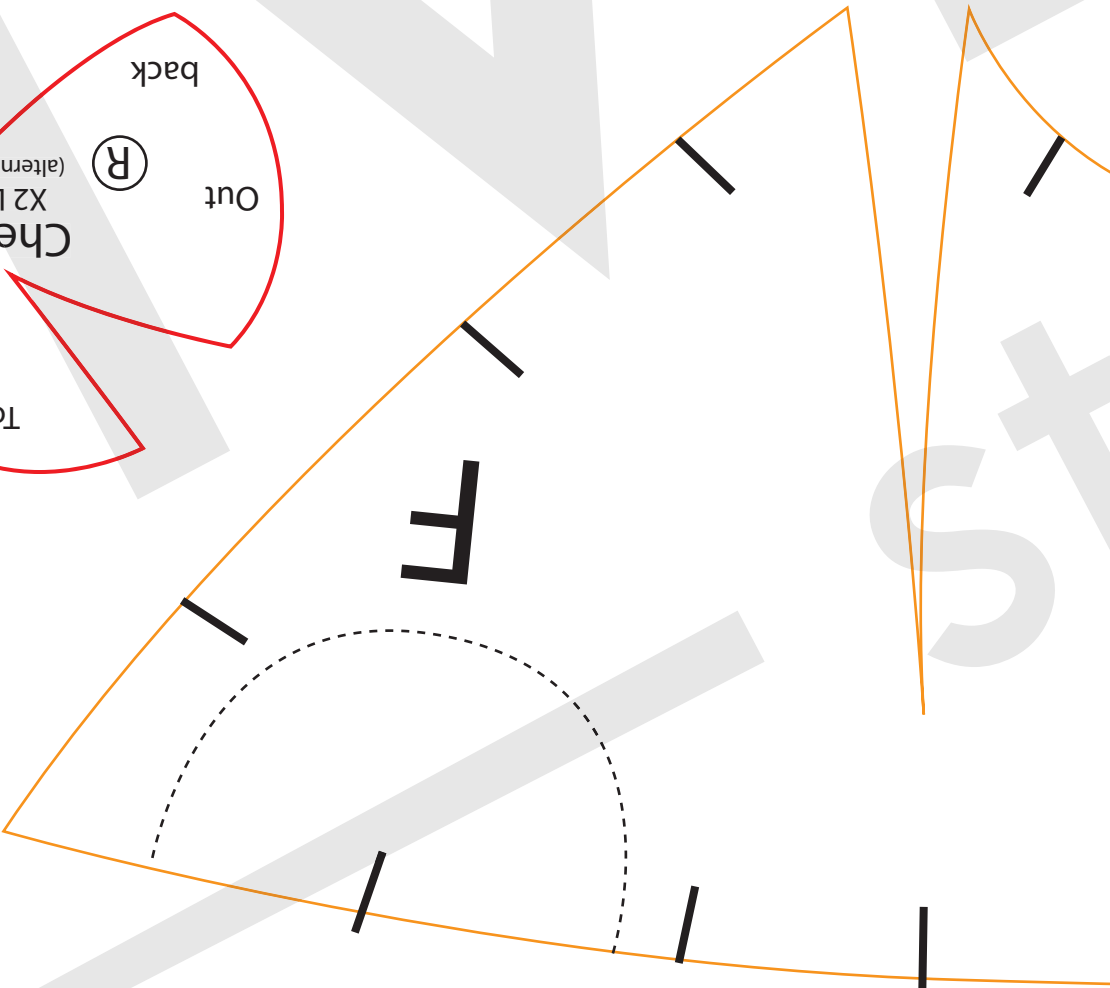
Top



Front

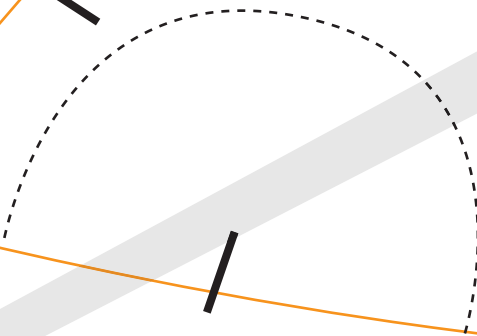
(R)

Top

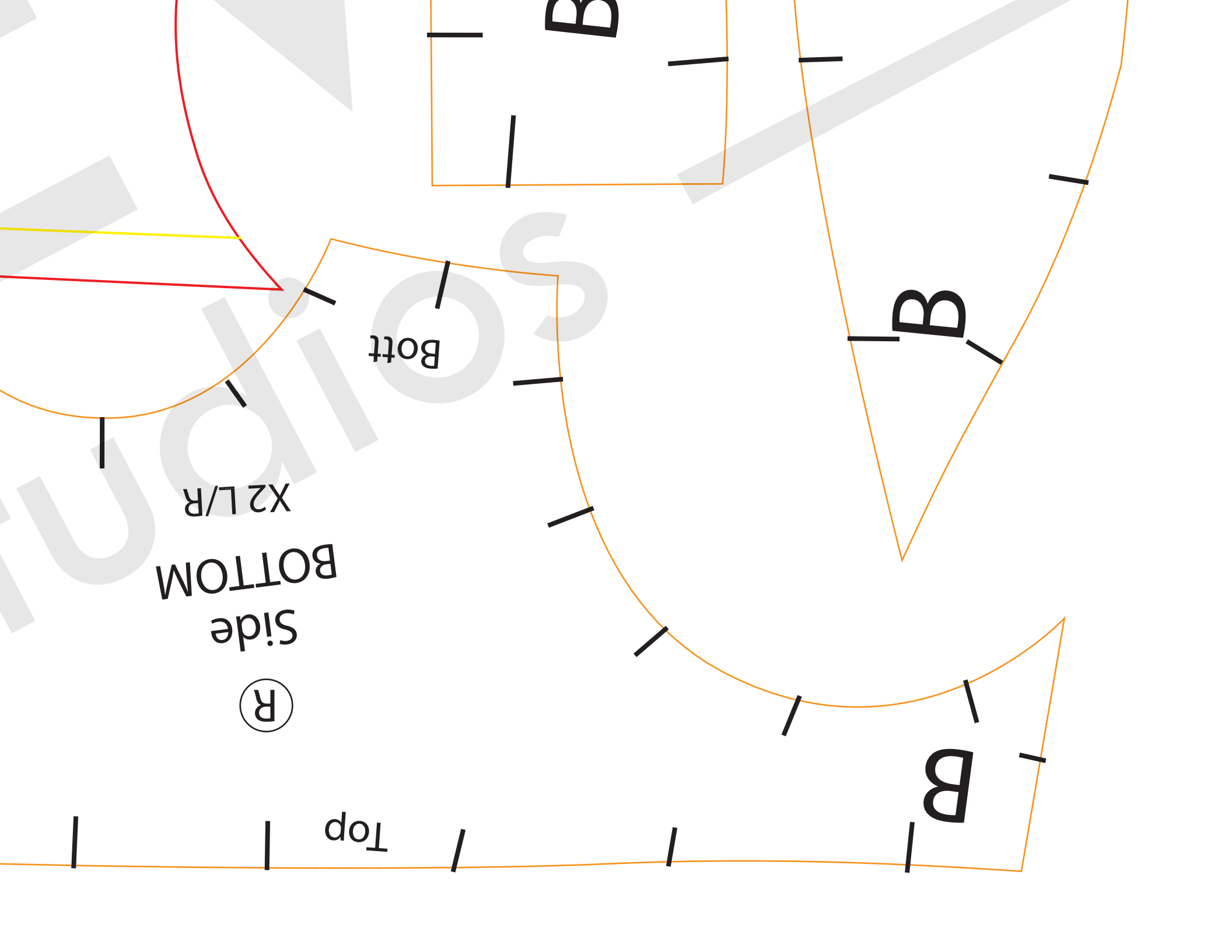


Wing
X2 L/R

Top



Front



B

Bott

B

X2 L/R

BOTTOM

Side

R

Top

B