

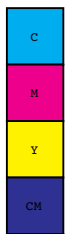
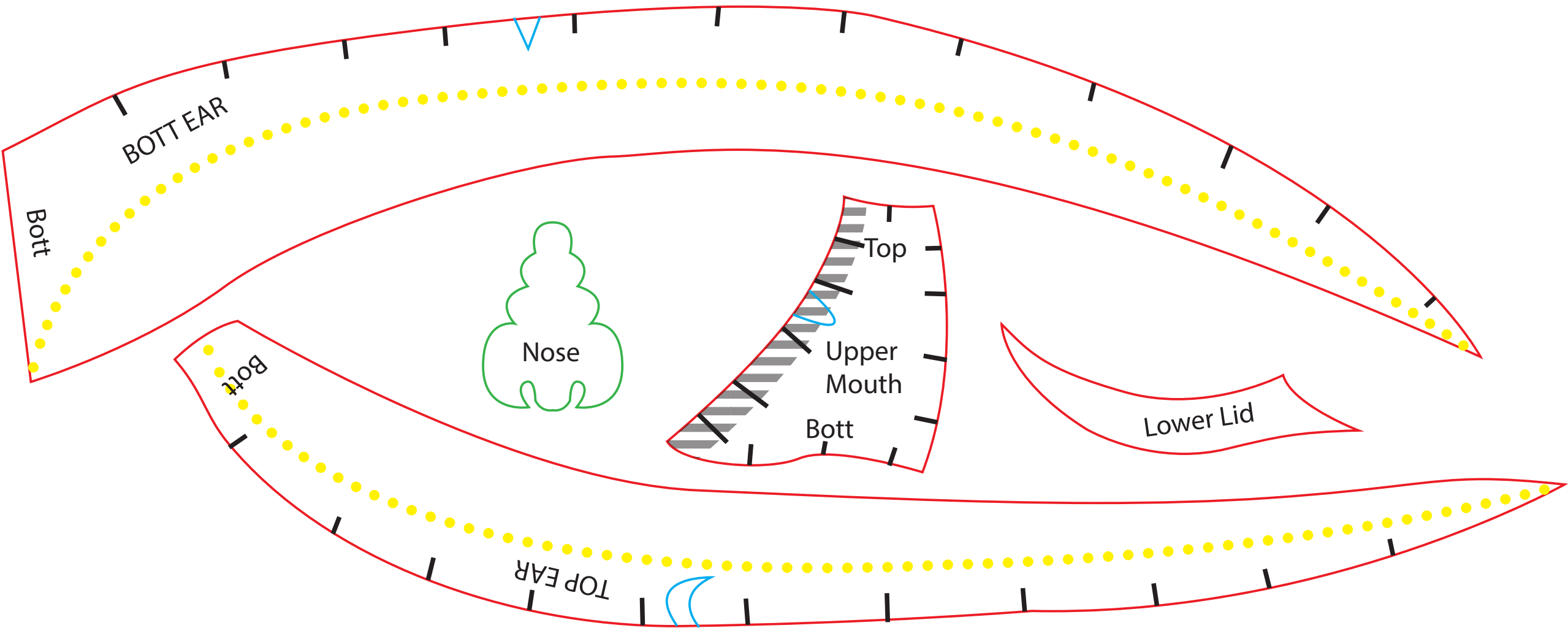
GIVEWAVE

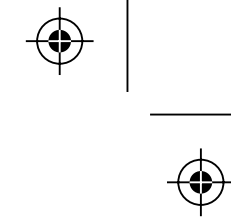
studios

BABY YODA (THE CHILD) HEAD PATTERN

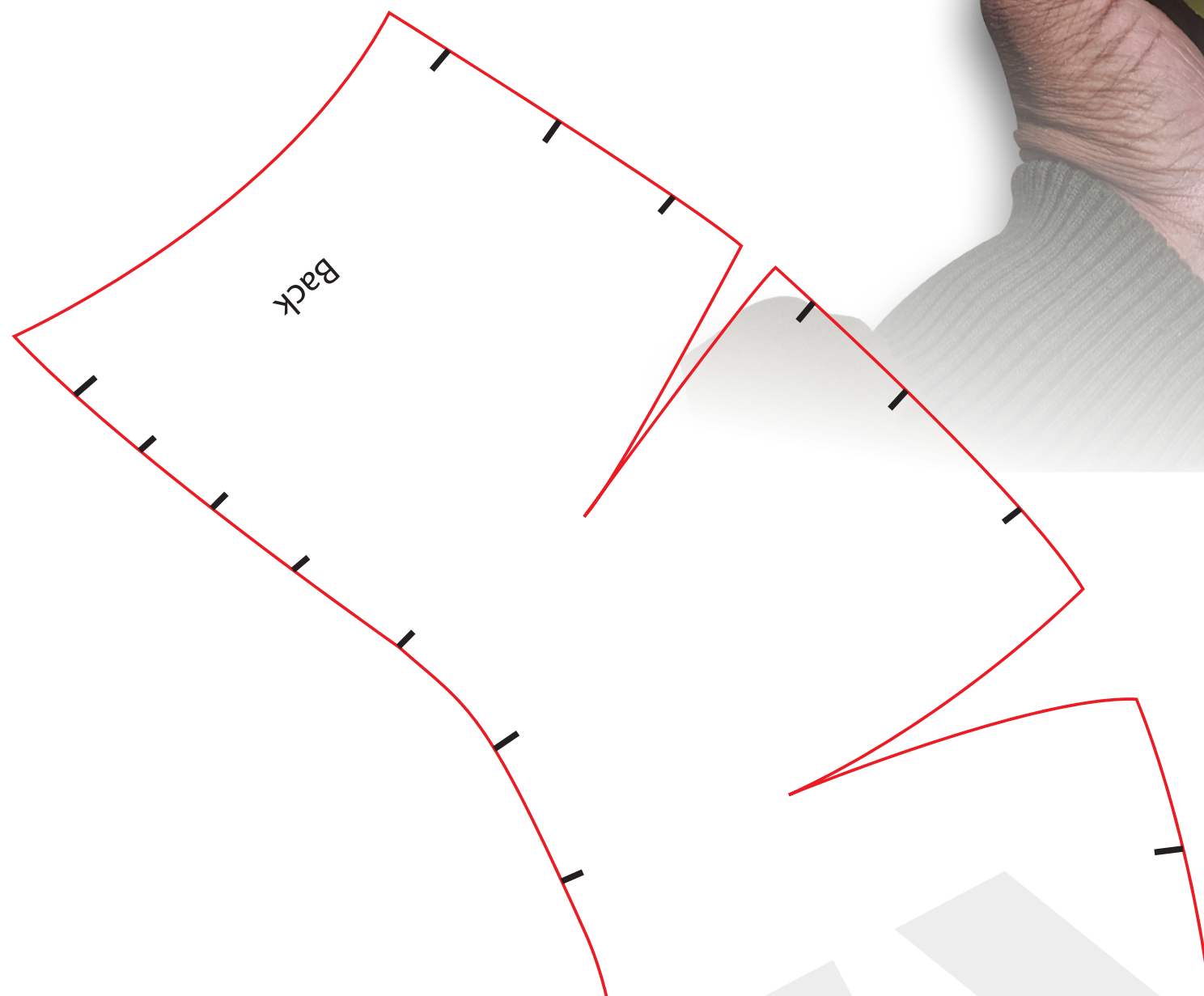
- 10 mm Foam
- 5 mm Foam
- connecting sides
- trench cuts
- 6 or 8 mm Foam
- 45° Inner Bevel

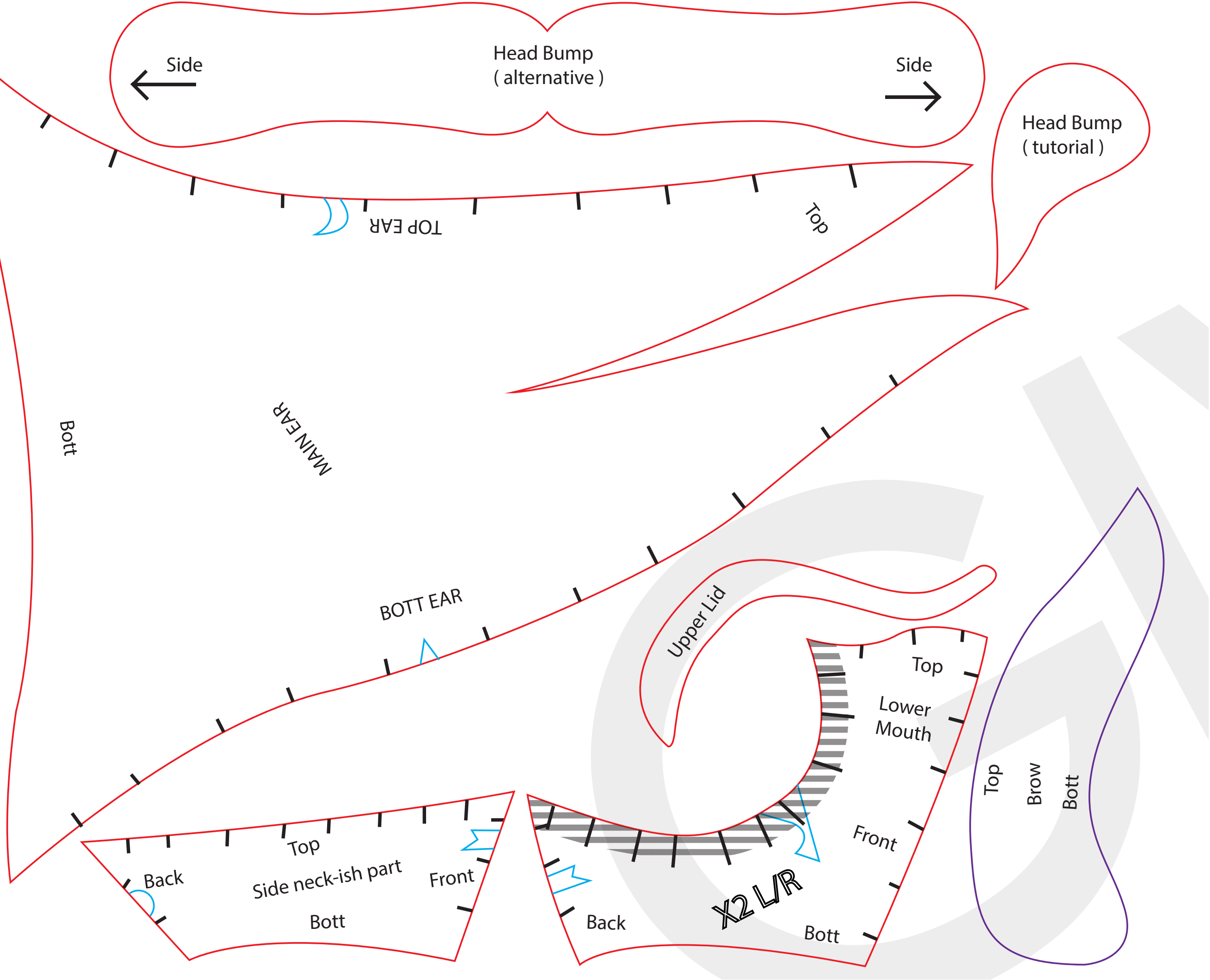
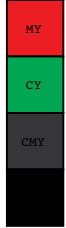
- NOTES:
- This Pattern at 100% scale makes a 21" L (ear to ear) x 8" W x 5" H
 - (NOTE: the smaller you scale down the harder it will be to make)
 - Be sure to watch the step by step tutorial on the GiveWave Studios YouTube channel
 - This contains RIGHT Patterns ONLY, be sure to flip your patterns
 - Only exception to the above is the Nose piece, only need one of each
 - Although this can be assembled with hot glue or other types of glue, CONTACT CEMENT is highly recommended for maximum adhesion
 - Head Bump pieces have multiple sizes/versions so that you can choose the one you like best
 - Nose, Head Bump & Lid pieces require a great amount of sanding

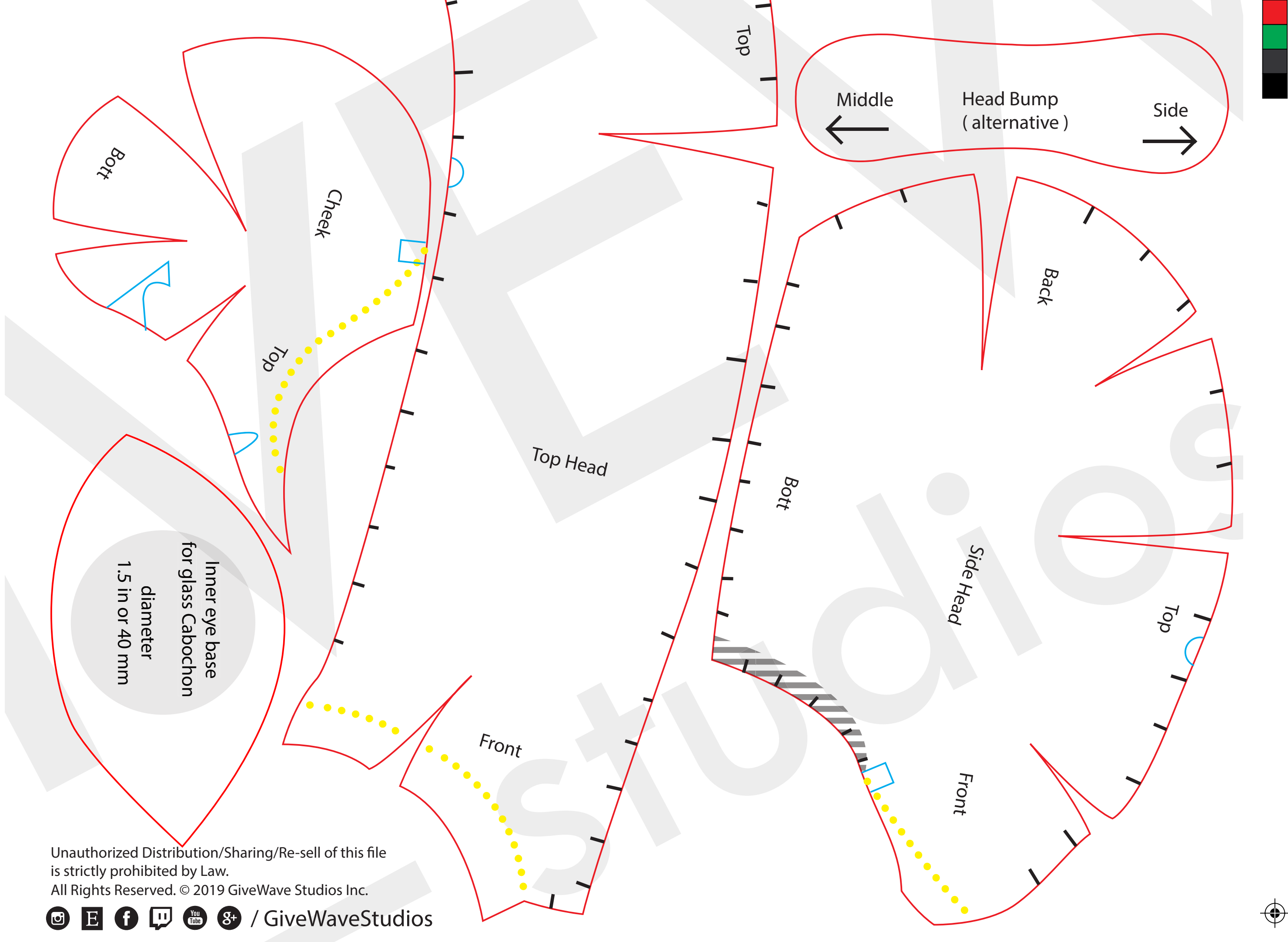




Head ... feel free to scale it up/down depending on your desired final size.
e)
dios Youtube Channel.
when cutting out pieces & label them Left & right to differentiate.
of those ^_^.
f adhesives using EVA foam
sion and durability.
i make your prop as accurate to the show as you'd like.
ng to look properly accurate, DON'T slack on these.







Unauthorized Distribution/Sharing/Re-sell of this file
is strictly prohibited by Law.
All Rights Reserved. © 2019 GiveWave Studios Inc.

      / GiveWaveStudios

